



Soundcamp 6
4 to 5 May 2019

Stave Hill Ecological Park, Rotherhithe,
London, SE16 6AX



Start	Saturday 4 May 2019	Finish	Start	Sunday 5 May 2019	Finish
05.00	<ul style="list-style-type: none">Reveil broadcast starts on Resonance Extra		00.30	<ul style="list-style-type: none">Reveil reaches Kolkata: stream by Sukanta Majumdar (The Travelling Archive)	
10.00	<ul style="list-style-type: none">Reveil reaches East coast of the Americas		03.00	<ul style="list-style-type: none">Reveil reaches Slovenia: stream from soundcamp at Lake Cerknica - CONA	
11.00	<ul style="list-style-type: none">Inspiral walk - Charlie Fox (Inspiral London) - from Sounds Interrupted (London Bridge) to the soundcamp via the site of the former William Curtis Ecological Park and Vision (Jessie Brennan) on Stave Hill	12.30	03.20	<ul style="list-style-type: none">Reveil reaches Beirut: stream by Budhaditya Chattopadhyay	
11.12	<ul style="list-style-type: none">Reveil reaches Radius soundcamp, Chicago Illinois - Jeff Kolar		03.20	<ul style="list-style-type: none">Reveil reaches Germany: streams from the Black Forest and the Gölpersee	
11.32	<ul style="list-style-type: none">Reveil reaches Milpe Bird Sanctuary, Chocó Biosphere Reserve, Ecuador - Paola Moscoso		04.30	<ul style="list-style-type: none">Dawn Chorus walk from the Shed - John Cadera, Richard Page-Jones	05.30
12.00	<ul style="list-style-type: none">Soundcamp starts		04.55	<ul style="list-style-type: none">Reveil reaches the soundcamp at Couvent Levat, Marseille Nord - Locus Sonus	
12.00	<ul style="list-style-type: none">Sound Camp: some exercises - Hannah Kemp-Welch - tools for listening + broadcasting - available on arrival and through the weekend		05.00	<ul style="list-style-type: none">Reveil coda: streams from soundcamps at End of The World Garden, Cornwall - Bram Thomas Arnold, Trail Mix; and Ravenglass, Cumbria - R.L. Wilson	06.00
12.00	<ul style="list-style-type: none">Site walk - Rebeka Clark	13.00			
12.00	<ul style="list-style-type: none">Lunch		05.50	<ul style="list-style-type: none">Tide Sense - Signe Lidén - Low tide at Ramberg, Vågan, Nordland - sound installation in the blue hut. (High tide will be at 12.00)	
12.00	<ul style="list-style-type: none">Pinhole photography workshop - Ky Lewis	15.00		<ul style="list-style-type: none">Reveil concludes	06.00
13.00	<ul style="list-style-type: none">Remote performance: keyboard improvisation between Georo village, Jeju, Korea and Stave Hill, Rotherhithe, London with Jiyeon Kim and Sam Baraitser Smith	13.30	06.00	<ul style="list-style-type: none">Breakfast - Old Post Office Bakery, Mood Cafe Van	
14.00	<ul style="list-style-type: none">Screening from Greenland Dock 1989, and 30 years on discussion in the Platform tent - Platform artists, with Hajra Gulamrassul, Will Essilfie, Herbert Girardet; and John Jordan remotely from La ZAD, Brittany	16.00	07.00	<ul style="list-style-type: none">Qigong & listening meditation - Blanc Sceol	
14.00	<ul style="list-style-type: none">Coffee	16.00	08.00	<ul style="list-style-type: none">Morning bird walk - John Cadera, Richard Page-Jones	09.00
16.30	<ul style="list-style-type: none">Deep listening workshop - Blanc Sceol (Stephen Shiell, Hannah White)	18.30	09.00	<ul style="list-style-type: none">Talk: Do birds hear as we do? - Dan Stowell (QMUL)	09.30
17.00	<ul style="list-style-type: none">Jessie Brennan in conversation	17.30	09.30	<ul style="list-style-type: none">Talk: Listening to internet infrastructure - Matt Parker	10.00
18.00	<ul style="list-style-type: none">Dinner	19.00	10.00	<ul style="list-style-type: none">Streaming workshop - DIY tech for sharing sounds in real time - SC	10.40
18.00	<ul style="list-style-type: none">Remote performance from the rooftop of Ελα Projects, Petralona, Athens - Alyssa Moxley (electronics) with Christos Bourantas (electronics), Thodoris Pistiolas (cello), Giorgos Gargalas (flute)	18.30	11.00	<ul style="list-style-type: none">Air Pressure: film screening - Angus Carlyle, Rupert Cox 2016	
18.30	<ul style="list-style-type: none">Speculations on the political ecology of urban bat surveys - Talk I demonstration - Cliff Hammett	19.00		<ul style="list-style-type: none">Tide Sense - Signe Lidén - High tide at Ramberg, Vågan, Nordland - sound installation in the blue hut - concludes.	12.00
19.10	<ul style="list-style-type: none">Single-Material Performance - Joshua Legallienne	19.40	12.00	<ul style="list-style-type: none">Lunch	
19.40	<ul style="list-style-type: none">Reveil reaches Japan - streams by Cyberforest; and Vanuatu - stream by Sandy Sur		13.00	<ul style="list-style-type: none">Acoustic Commons: Round table discussion - Ella Finer with members of the Acoustic Commons Study Group (Emma Bennett, Amy Cutler, Helen Frosi, Laura Cannell, Dan Hall) and guests, will lead an open discussion in the Shed	15.00
20.08	<ul style="list-style-type: none">Join Cyberforest remote audio census at daybreak in Mayeyama, Hokkaido; and Fuji Iyashinomori with ornithologists Reiko Kurosawa (NPO Bird Research), Mutsuyuki Ueta (BR), and Kaoru Saito (Cyberforest)	20.44		<ul style="list-style-type: none">Soundcamp finishes	16.00
20.45	<ul style="list-style-type: none">Bat walk - Iain Boulton - meet at the Shed	21.40	Vision, a new work by Jessie Brennan, will be on the top of Stave Hill from 26 April. Sounds Interrupted, a new sound installation by Jessie Brennan and SC is at London Bridge Station, in the ticket hall at the junction of St Thomas St and Bermondsey St from 25 April - 10 May.		
21.00	<ul style="list-style-type: none">Remote performance from the soundcamp at Eudlo Creek, Queensland - Leah Barclay, Lyndon Davis, Brent Miller	21.30	The iconic Platform tent will make a return to the Ecology Park after 30 years. It will be pitched over the Soundcamp weekend as 'The Tent that Can Hear', for screenings, exhibition, and discussion.		
21.00	<ul style="list-style-type: none">Reveil reaches Queensland: freshwater dawn chorus from Eudlo Creek; subtropical forest canopy at Mary Cairncross -Biosphere Soundscapes		Reveil 6 will make a live sound loop of the earth at daybreak starting at 5AM Saturday morning and ending at 6AM on Sunday. Listen in the soundtent, the Shed or at Resonance Extra and participating stations.		



Reveil

Reveil (2014-19) is a 24 hour broadcast of live sounds of daybreak. Starting near the Greenwich Meridian at 5AM, Reveil travels West following the grey line just ahead of sunrise, when birds and other organisms generate a continuously changing wave of sound. Live audio feeds are supplied by streamers around the world using devices from phones, laptops and Raspberry Pi's to commercial broadcasting equipment. Domestic scale projects join formal research networks to realize a collective composition of environmental sounds lasting one earth day. Reveil links a series of micro festivals (soundcamps) on International Dawn Chorus Day.

Produced at Stave Hill Ecological Park (TCV) in London by Soundcamp

Real-time soundmap by Locus Sonus (ESA-Aix, PRISM, AMU)

Primary feed carried by Wave Farm, Acra, New York (US Broadcast partner)

UK broadcast partner:

Resonance Extra

Relayed by participating FM and netradio stations

IDCD (1989-) is a project by the Wildlife Trust for Birmingham and the Black Country

Supported by Arts Council England and private contributions

With thanks to all the streamers, projects and stations who make up the broadcast.



William Curtis Ecology Park drawing

Image: Trust for Urban Ecology

For me, radio is about a relationship between people, things, and systems. Radio is an active material, within the airwaves, and simultaneously immaterial, floating above and flowing through human and non-human bodies. Radio travels through people, architectures, and the air. It can mobilize a large amount of people in a short amount of time.



Walk

Charlie Fox (Inspiral London)

a walk from Jessie Brennan's installation Sounds Interrupted at London Bridge, past the site of the William Curtis Ecological Park at the foot of City Hall, to its successor at Stave Hill. The walk leaves London Bridge Reception at 11 AM on Saturday 4 May, to arrive at Stave Hill Ecological Park around 12.30pm

Reveil reaches Chicago

Live stream from the Radius soundcamp by Jeff Kolar

From: Four Questions with Radius Founder Jeff Kolar, August 2017 on the occasion of Sonic Arcade, Museum of Arts and Design (MAD), NY

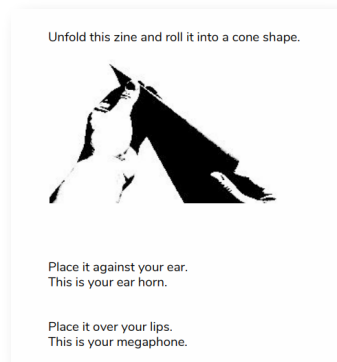
Reveil reaches Milpe Bird Sanctuary

Live stream by Paola Moscoso, with Mindo Cloudforest Foundation and Sussex Humanities Lab

The reserve is in Los Bancos-Milpe, a Birdlife International defined Important Bird Area at the intersection of Andean and Pacific basin environments. 100 hectares of forest at 1020-1150m support many Chocó endemics, with iconic species such as the Spectacled bear, Cock of the rock, Black-breasted puffleg, ocelots, and countless insects, amphibians and reptiles. The reserve also provides water, agricultural products and electricity for urban areas. Around 880,000 people live within the Andean Chocó region, which was designated a UNESCO Biosphere Reserve in 2018.

Hediosmum, Milpe forest.

Photo by Nicanor Mejia



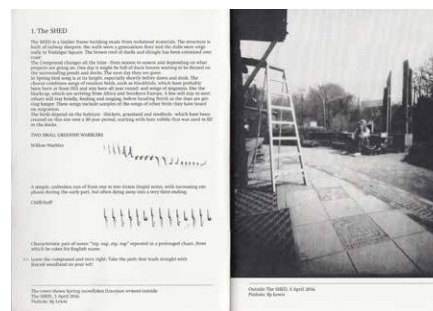
Soundcamp: some exercises

Hannah Kemp-Welch

Stave Hill Ecological Park

Zine available on arrival and throughout the weekend

This zine proposes activities for visitors during their stay at Sound Camp. The work invites you to investigate the park through sound and consider broadcasting as a strategy for sharing ideas we have about the world.



Site walk

Rebeka Clark

From: Spring, 1 of 4 seasonal walk booklets around Stave Hill Ecological Park



Pinhole workshop

Ky Lewis

This workshop will give you the opportunity to use a homemade pinhole camera, capturing the many aspects of the event in true analogue fashion with photographic paper, developing the image in a 'pop-Up' darkroom in the Straw Bale shed. The images will then be recorded and will be added to the ongoing archive of Stave Hill a selection of images may also be shown as a growing mini exhibition on the shed.

"Paranormal Peddle Pump" 5 May 2018 Taken with a pinhole camera whilst someone was cycling in order to pump water.

Photo: Ky Lewis

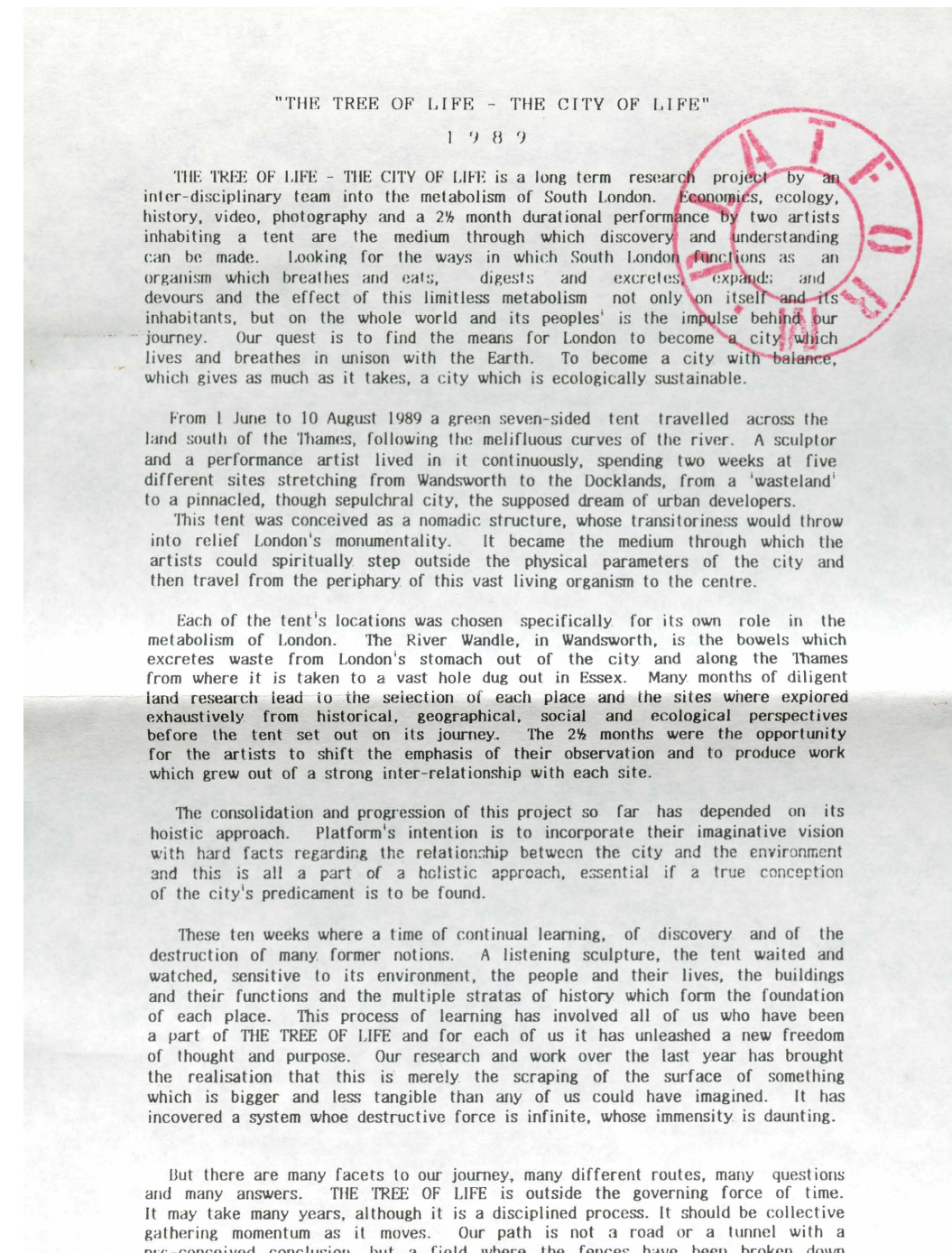
Reveil reaches Golden Colorado

Live stream by John Hopkins

A half-circle rotation, standing, looking east: from the far north, left, the Flatirons, vertically-tilted 280-million-year-old sandstone spires; then, North Table Mountain, a broad mesa of Paleocene lava flows, paired with South Table Mountain; then a wide gap straight east across the flat Denver Basin and, eventually, Kansas; bookending the view to the south-south-east, right, the low expanse of Green Mountain; behind me, the raw mass of the Rocky Mountains...

hopkins/neoscenes, 25 April 2019

+++++



*Tree of Life, City of Life essay, 1989
Written by Platform*



The Tent That Can Hear

Jane Trowell, James Marriott,
Hajra Gulamrassul, Will Essilfie
Herbert Girardet, John Jordan

During Soundcamp 2019, Platform's James Marriott and Jane Trowell will be in residence at the iconic tent from Platform's 1989 project 'Tree of Life, City of Life'. This project involved two artists - John Jordan and James Marriott - living in the specially designed tent, in 5 resonant sites across the south banks of the Thames, between the river Wandle at Wandsworth Town, and Greenland Dock. The artists had an ecological intention: to listen to the metabolism of the city, a city which is born, breathes, ingests, excretes, dies and is reborn. 30 years on, they will be reflecting on what that project found, and what it means for now and 30 years in the future.

To help them, on Saturday between 2 and 4pm, they will be joined in conversation by cultural ecologist Herbert Girardet, whose ideas informed the original project; John Jordan, skyping in from La ZAD in Brittany; Hajra Gulamrassul, art historian and Platform thinking partner; and educator and researcher, Will Essilfie. Hajra and Will have been working in the Platform project archive at the Bishopsgate Institute, London. They will bring rare materials from Tree of Life, City of Life to spark key questions for the conversation.

Above: Tree of Life tent at Coin Street,
Lambeth, London, 1989
Photo: Jens Storch



Right: 'Measure of the New Days' banner, at the Wandle
delta, Wandsworth, London, 1989
Photo: Jens Storch



Image: Blanc Sceol

Deep listening Blanc Sceol

Deep Listening, as developed by the late composer and activist Pauline Oliveros, explores the difference between the involuntary nature of hearing and the voluntary, selective nature of listening. The Saturday afternoon workshop will focus directly on environmental listening, to open our ears to our surroundings and the sonic tapestry of Stave Hill ecology park, and connect us to the wider ecological questions facing the world. Through Deep Listening exercises, bodywork, and 'Sonic Meditations' - text scores written by Oliveros in 1971 - we will connect, move and sound with our surroundings, expanding our awareness of the sonic environment, externally and internally, in a collaborative, experimental and playful way, for personal and community growth.

This workshop is open to all with no previous experience needed, just a willingness to participate. It will be facilitated by Banc Sceol - sound artists and certified Deep Listening practitioners Stephen Shiell & Hannah White.

There will also be a Sunday morning Qigong & Listening meditation session.

Photographs of Stave Hill

Jessie Brennan and Rebeka Clark

The images of Stave Hill Ecology Park, which belong to the park's photographic archive, show the transformation of the site from former wet docks to urban nature reserve, when the park was laid out more than 30 years ago.

1. Russia Dock view W over corner to Tower Bridge
29 July 1984.

2. Rotherhithe Ecological Park from E corner (showing limited spread of ruderal plants). Canada Water estate towers in background. [1984]

3. Stave Hill, Rotherhithe.
25 August 1985.

4. Rotherhithe Ecological Park opened to the public in 1988. Stave Hill in background. [1987/8]

5. Installing the marsh
1986.

6. Looking NE across the site from top of Stave Hill. Contractor putting finishing touches to outfall sluice of pond. August 1986.

7. Stave Hill view towards NE corner,
1992.

8. Stave Hill [pan shot],
Autumn 1995.

Captions show annotations from reverse of photographs or completed by Rebeka Clark.
All photo credits: Stave Hill Ecology Park



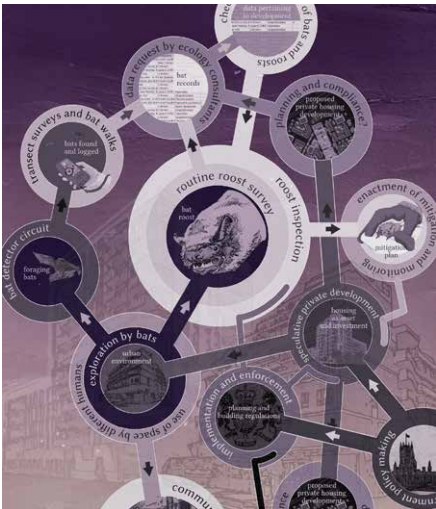


Image: Cliff Hammett

Reveil reaches Vanuatu

Dung Verei (Sound of the Island)
Live stream by Sandy Sur and the
Leweton Cultural Group with
Leah Barclay

Nightsniffing: bat detection as a field ecology of urban change and contestation

Talk / demonstration by Cliff Hammett

Nightsniffing is an ongoing project that reimagines urban bat detection and walking as a means to collectively investigate the systems that shape the city, beginning from the complex relations that bats have with cities, planning and data structures. These relations include how the interests of bats are considered within urban planning and regulation, and the ways bats inhabit, affect and are affected by a built environment that is subject to constant transformation through expropriative economic logics and decision-making systems. Engaging with the technologies and methods that make bats perceivable, Nightsniffing aims to develop walks and events in London that allow different conversations to emerge regarding who and what are cities are for, and how we might wish for them to function differently. This talk and demonstration will look at the on-going research for the project, including an exploration of how bat walks are experienced through mapping and interviews, the investigation of databases and systems related to planning and development, and the development of a property development datasniffer that can ‘detect’ planning applications in the context of a bat walk.

Leweton Cultural Group hails from the remote tropical northern islands of Gaua and Merelava in Vanuatu, and live in a village in Espiritu Santo where they present, share, and maintain their unique traditions and practises across cultures and generations. These remote island communities are experiencing the true ramifications of climate change and continue to explore methods to bring a wider global awareness and engagement with the fate of their islands. The Leweton Cultural Group has attracted attention from across the world through presenting traditional performances including the Vanuatu Women’s Water Music – which enacts deep connections among land, water, nature and culture. Sandy Sur’s research focuses on the way this performance tradition is evolving in response to rapidly changing climate, which Sur takes as a call to action. The title of the live stream - Dung Verei (Sound of the Island) - is also the name for the Torba Cultural Festival. Taking place across the Banks Islands and Torres Islands in Vanuatu in September 2019, this project mobilises the arts, culture, sound and technology, to support advocacy by local people for meaningful action on climate change.



Maeyama, Hokkaido

Fuji Iyashinomori,
Yamanakako

Reveil reaches Japan

streams by Cyberforest

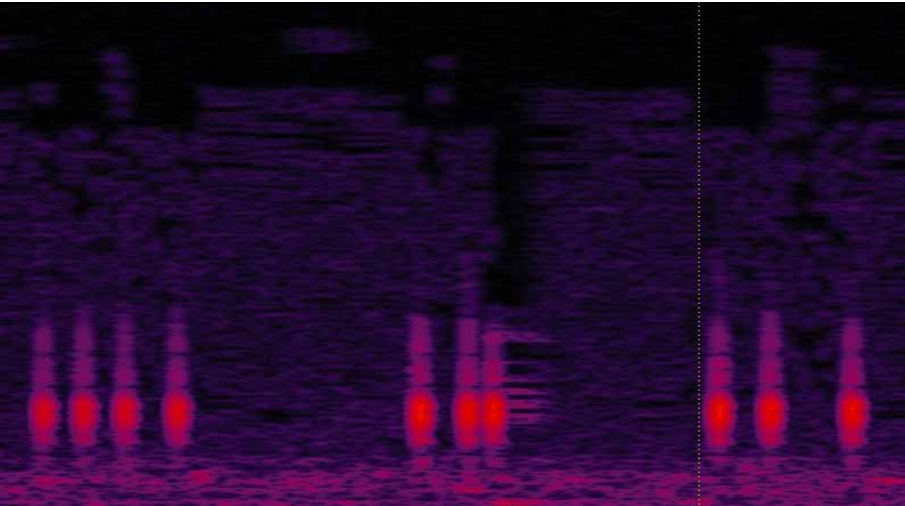
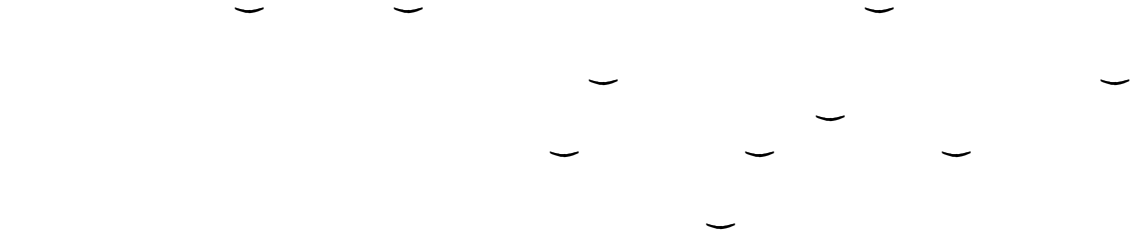
Join Cyberforest remote audio census at daybreak in Maeyama, Hokkaido; and Fuji Iyashinomori with ornithologists Reiko Kurosawa (NPO Bird Research), Mutsuyuki Ueta (BR), and Kaoru Saito (Cyberforest)

Frequency of appearance of birds by species over the period 1-10 May in the past season from Bird Research remote audio census 2018, as calculated by Mutsuyuki Ueta

0.99	Asian stubtail	ヤブサメ
0.89	Japanese Nightingale	ウグイス
0.86	Coal tit	ヒガラ
0.85	Brown-headed thrush	アカハラ
0.38	Goldcrest	キクイタダキ
0.38	Willow tit	コガラ
0.38	White’s Thrush	トラツグミ
0.38	Eastern turtle dove	キジバト
0.37	Japanese robin	コマドリ
0.35	Eurasian nuthatch	ゴジュウカラ
0.34	Treecreeper	キバシリ
0.26	Eurasian Wren	ミソサザイ
0.15	Red-flanked bluetail	ルリビタキ
0.14	Narcissus Flycatcher	キビタキ
0.12	Black-faced bunting	アオジ
0.11	Himalayan Cuckoo	ツツドリ
0.10	Eastern crowned willow warbler	センダイムシクイ
0.10	Grey bunting	クロジ
0.02	Jungle Crow	ハシブトガラス
0.02	Oriental Greenfinch	カワラヒワ
0.02	Sakhalin leaf-warbler	エゾムシクイ
0.965	Narcissus Flycatcher	キビタキ
0.845	Coal tit	ヒガラ
0.638	Japanese Nightingale	ウグイス
0.613	Eastern turtle dove	キジバト
0.450	Japanese tit	シジュウカラ
0.437	Oriental Greenfinch	カワラヒワ
0.234	Eastern crowned willow warbler	センダイムシクイ
0.207	Japanese White-eye	メジロ
0.083	Meadow Bunting	ホオジロ
0.070	Brown-headed thrush	アカハラ
0.070	Goldcrest	キクイタダキ
0.067	Japanese Thrush	クロツグミ
0.038	Varied tit	ヤマガラ
0.016	White-bellied green-pigeon	アオバト
0.016	Eurasian nuthatch	ゴジュウカラ
0.016	Japanese Grosbeak	イカル
0.009	Asian brown flycatcher	コサメビタキ
0.001	Japanese Green woodpecker	アオゲラ
0.001	Chestnut-cheeked Starling	コムクドリ

Bat walk
Iain Boulton

Meet at the shed - 20:45



Remote performance and live stream from Eudlo Creek

In 2019, Eudlo Creek will join #Reveil2019 with the installation of live microphones on the banks of Eudlo Creek and a sound camp at Montessori International College on Kabi Kabi Country. This opportunity is part of a new creative project and education program that responds to the cultural and biological diversity of Eudlo Creek and its interconnected wetlands and rainforest. The project brings together art, science, technology and first nations cultural heritage through the lens of acoustic ecology and environmental education.

The program is led by Dr Leah Barclay, Arts Front and local indigenous artists Lyndon Davis and Brent Miller. The project has a particular focus on new ways to understand nature through listening and the application of new technologies for environmental art projects.

The Eudlo Creek sound camp and live stream take place on Kabi Kabi country. We would like to acknowledge the Traditional Owners of the land and pay our respects to elders past, present and future.

Live stream of freshwater dawn chorus

River Listening (underwater hydrophones), streaming from the Brisbane River and Maroochy River, Queensland, Australia

River Listening is an interdisciplinary research project exploring the cultural and biological diversity of global river systems through sound. The project examines the creative possibilities of accessible and noninvasive recording technologies to monitor river health and engage local communities in the conservation of global river systems. River Listening combines emerging fields of science with acoustic ecology, creativity and digital technology to further the understanding of aquatic biodiversity and inspire action at a time when the conservation and management of freshwater ecosystems is a critical priority.

Listening notes - sonagrams of shrimps, catfish

Spectrogram of an aquatic beetle in the family Gyrinidae (Whirligig beetles).
Image: Leah Barclay



Live stream from Mary Cairncross rainforest

The Rainforest Canopy live stream launched as part of the Mary Cairncross Reserve BioBlitz in March 2019 and is featured in the “Biodiversity: That’s Life” exhibition at the Rainforest Discovery Centre. The exhibition celebrates rainforest biodiversity with never-before-seen perspectives of the rainforest reserve. During the BioBlitz, tree-climbers took scientists and artists into the canopies of five strangler figs, to study these living skyscrapers and all the different species that call the forest home.

Mary Cairncross Scenic Reserve consists of subtropical rainforest across an area of 55 hectares and reaches a peak canopy of 48m. Plants found in the reserve include 107 species of tree, 30 herbs, 50 vines, 3 palms, 21 species of fungi and 26 kinds of shrubs. Animals include 139 birds including the wompoo fruit-dove, brown cuckoo-dove, tree-creepers, thornbills, scrub-wrens, green catbird as well as 11 different marsupials, 3 bats, 20 lizards, 14 snakes and 14 frog species.

The rainforest canopy live stream is on Jinibara Country. We acknowledge the traditional owners of the land and pay our respect to elders past, present and future.

Rainforest canopy, Mary Cairncross Reserve.
Image: Leah Barclay

Networked performance:
Jeju-London Ambience
Exchanges

Jiyeon Kim, Sam Baraitser
Smith with Gangil Yi

Culture Space Yang, Georo
Village, Jeju, Korea

The program in Jeju includes:

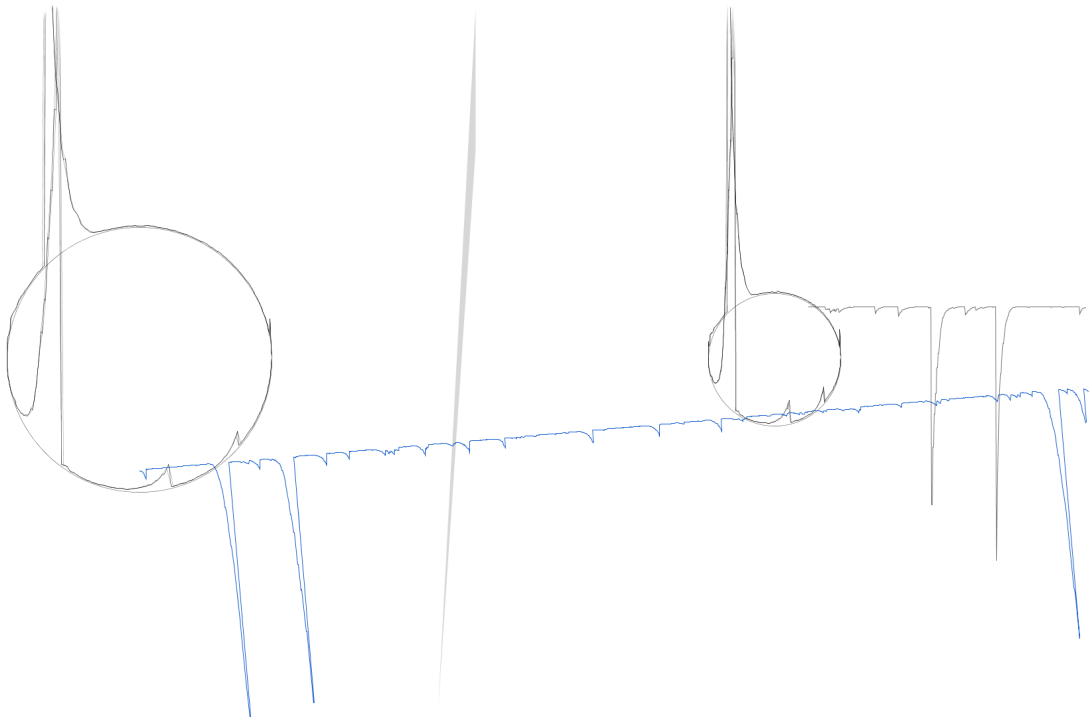
21:00 Introduction to Jeju live streamer at Culture Space Yang yard
and Reveil listening session

21:30 to 22:00 (12.30-13:00 in London) Kim Ji Yeon - Keyboard,
Jeju Live Stream, Gangil Yi - Data Visual

22:00 to 22:30 (13:00-13.30 in London) Duet: Kim Ji Yeon -
Keyboard, Sam Baraitser Smith - Melodica, Jeju and London Live
Stream, Gangil Yi - Data Visual, Max Baraitser Smith - live electronics

The performance will make a link between two distant places via
live streaming and improvisation . Gangil Yi will use real-time data
to visualize the sonic character of the sites and the structure of the
musical exchanges.

Jiyeon Kim and Gangil Yi started streaming radio in 2015 around their
house in a mountainous part of Jeju Island. ‘Weather Report’ was
formed to pursue these projects. Weather Report installed a permanent
live streamer in the front yard of the Culture Space Yang in Jeju in
2018, which can be heard on the Locus Sonus soundmap.
[locusonus.org/soundmap/051/
soundtent.org/soundcamp_2019.html](https://locusonus.org/soundmap/051/soundtent.org/soundcamp_2019.html) Weather Report
Sam Baraitser Smith is a musician and designer based in London and
part of the Soundcamp collective.



*Gangil Yi: live data visualization of networked
sounds and places for ‘Jeju-London Ambience
Exchanges’ Spring 2019*

Reveil reaches Kolkata
stream by Sukanta Majumdar
(The Travelling Archive)

The mic is sitting under a corrugated tin shed on
the roof of the flat I live in, churning the ocean of
Kolkata sounds and offering it’s hearing through
the stream.
The stream feels like a tightly woven densely
designed Kashmiri carpet. You just lie-down on it
and feel the warmth first and then you slowly start
to discover the incredible detailing of motifs and
designs that makes it sound so dense!

This mic’s hearing is two-fold. It hears the
atmosphere naturally and it also hears sounds
transmitted through the tin shed because it sits
really close to it. When the birds sit and walk on
the shed you listen to their footsteps along with
their chirping. When it rains, you almost feel the
vibration of the shed as the water pours down on
it. When a dry leaf falls on it you hear its every
small movement with the wind.

Crows are the most commonly heard birds in the
stream. But you also hear Indian cuckoo, Indian
myna, Sparrows, Kites, the Kingfisher, Black-
hooded oriole, Parrots, Spotted doves and other
birds in the daytime. At night you can hear owls
and street dogs. Sometimes (particularly on the full
moon!)the street dogs go crazy and you get to listen
to furious barking standoffs between the different
gangs.

Night time listening lets you hear the acoustic
space of the location quite vividly. Occasional loud
motorbikes, train horns, dog barking from different
directions and drunken people’s loud conversations
reverberate through the alleys and concrete walls
and create an acoustic space, which is very different
from the daytime acoustic space.

One unique feature of this stream is the human
voice. The houses are closely built in this part
of the city and because of the tropical weather
the windows and doors are open all of the time.



Also this house is located beside the main road,
so human voices are always present. It raises a
question about this project, that if it is intruding
into someone’s private space or not! How do you
keep sound “privacy” in a city like this where the
population density and most of all the economy,
make people build houses on top of each other.

There is a playground just beside the house. You
hear lots of kids playing in the afternoon and early
morning. There is a Krishna temple at one corner
of the playground. Every morning they sing kirtan,
which is a kind of devotional song. This is a Hindu
dominated area, so you hear conch shells and bells
from different houses as part of their daily ritual.

This stream might sound quite overwhelming when
you listen to it for the first time. But this is how
the space is. Frequent political rallies and meetings,
increasing religious festivals and gatherings, really
insane honking, traffic, heat, wind, monsoon rain,
huge tropical thunderstorms in summer, endless
construction work and extremely dense population
make this truly a wall of sound!

This ephemeral stream tells you quite a solid story
about a place and a time, where it sometimes feels
kind of unreal to be living.

*Overleaf: Vision - Installation phase April 2019
Photo: Jessie Brennan*





Reveil reaches the Gülper See

Live stream from the soundcamp by Joost van Duppen and Laura Weber

The event will introduce visitors to the Gülper See through a NABU excursion, workshops, listening sessions and hands on field recording. Thousands of water birds are currently present on the lake. Dawn and dusk offer unique opportunities to listen to sounds of the migration. We expect to hear cranes, white-fronted geese, lapwings and sedge warblers. Other species include golden plover, common snipe, water-snipe, oystercatcher, ruff, black-tailed godwit, curlew, redshank, corncrake, pintail, shoveler, and garganey. The dawn stream will be followed by a public afternoon performance for Open Gallery Day in Brandenburg.



And the sun keeps coming up

Remote performance from the Athens soundcamp

Alyssa Moxley (electronics), Christos Bourantas (electronics), Thodoris Pistiolas (cello), Giorgos Gargalas (flute)

On 4th May, we will watch the sunset while listening to the sunrise. The audience will be invited to share their first thoughts when they wake and last thoughts before they go to sleep. These will become the basis for a live performance relayed from the rooftop of EΛα Projects in Petralona. The following day at dawn, we will contribute a live stream to Reveil from Lykavittos.



Reveil reaches Slovenia

CONA Soundcamp at Steklenik, Botanic Gardens, Ljubljana
Live stream by Brane Zorman and Irena Pivka (radioCona)

Lake Cerknica is one of the largest intermittent lakes in Europe, designated as an internationally important wetland. It appears every year on the karst polje in Notranjska regional park, growing to cover 30 sq km. 276 bird species have been observed - half of all European species. During the dry season, the lake disappears and vegetation grows up. So recreational activities such as fishing and skating take place on the same terrain as hay making, in the span of a single year.



Reveil reaches Beirut

stream by Budhaditya Chattopadhyay

Budhaditya Chattopadhyay
Media Artist and Scholar
budhaditya.org/

Situated in the west of Beirut, Hamra is a lively area vibrating with a deep presence of intense human activities ranging from business to a busy nightlife. With an existence from the late 19th century and being a site affected by the Lebanese Civil War, Hamra wakes up early in the morning and goes to sleep late at night.

Reveil reaches Calvanico, Salerno

Stream from soundcamp by Luca Buoninfante, Beatrice Ferrara, Raffaele Maricone, Leandro Pisano

The rural landscape, both as a sound archive of latent and preserved memories and as a transient environment of flowing ideas, bodies and culture, becomes a listening space that can be mapped by coordinates and other reference points in relation to a contemporary idea of rurality.

..

Sound traverses place, tells stories, interrogates how we pass through and inhabit spaces and geographies in the here and now. As a powerful vector of knowledge, sound reveals the fragmentation and precariousness of that which we deem real, providing different visions and approaches to the experience of what surrounds us.

..

Sound invites us to experience rural locations, abandoned places and urban peripheries as spaces in which to question our approach to history and landscape, our sense of living in a specific place and the relationship that we have with it. The sound of environments, spaces and landscapes reveal the challenges and territorial transformations that inform the ideological, infrastructural and biological ecosystems of which we form a part.

From Listening (deeply) to rurality
by Leandro Pisano and Beatrice Ferrara Aug 2017 trans Sarah Waring



Reveil reaches the Black Forest

Vogelfest soundcamp by Norbert Schnell, Olsen Wolf, Nikolaus Hottong

Based at the legendary “Fuchsfalle” inn near Oberkirnach in the middle of the forest (GPS: 48.099495, 8.268948), the programme includes workshops by Ralf Schreiber and Zirbinski, performances by Marc Lee, Wolfgang Müller and Rym Nouioua, with screenings of films by Jan Van Ijken, Paolo Passolini and Rhona Mühleback. Locally sourced and prepared food by Missy Moo. With a live transmission from the forest and multichannel live sound installation by students on the Music Design Master’s programme and Streaming Camp of the Digital Media Faculty, Furtwangen University.

Soundcamps and selected streams

From 05:00 London time UTC+1 on Saturday 4th May to 06:00 on Sunday 5th May 2019

Key

Start times indicative, in London time UTC+1 — based on start of civil twilight, corrected for timezone. May be adjusted to fit the broadcast schedule

Civil Twilight (CT) and Sunrise (SR) are local times

^ indicates a soundcamp; full listings at soundtent.org/soundcamp_camp.html

Underlines indicate audio streams on the Locus Sonus soundmap: locusonus.org/soundmap/

Listen

Wave Farm: wavefarm.org/listen
Resonance Extra: extra.resonance.fm/
All participating stations: soundtent.org/soundcamp_listen.html

Connect
On twitter:
#Reveil2019
#Soundcamp2019
@soundtent

START

^ Stave Hill Ecological Park, Rotherhithe, London
START SAT (London time) 05:00
URL: locus.creacast.com:9001/london_stave_hill.ogg
Streamer: Soundcamp
Coordinates: 51.5017°N 0.0397°W
UTC +1
CT 04:48
SR 05:27
Notes: Start time at the beginning of the broadcast at 05.00 UTC +1

Hackney, London
START SAT (London time) 05:15
URL stream.dawnscarfe.co.uk/stream
Streamer: Elderfield Rd
Coordinates: 51.4817°N 0.6136°W
UTC +1
CT 4:48
SR 5:27
Notes: Roof

Loughborough Junction, South London
START SAT (London time) 05:15
URL: locus.creacast.com:9001/london_camberwell.ogg

Streamer: Grant Smith
Coordinates: 51.4646°N 0.0981°W
UTC +1
CT 4:48
SR 5:27
Notes: Contexts > acousticcommons.net self-noise.net/

Kilburn, London
START SAT 05:15
URL: 2.onj.me/outside
Streamer: André Louis
Coordinates 51.5371°N 0.1911°W
UTC +1
CT 4:48
SR 5:27

Windsor, London
START: 05:15
URL: locus.creacast.com:9001/Heathrow_Planes1.ogg
Streamer: Christian Nold
Coordinates: 51.4817°N 0.6136°W
UTC +1
CT 4:48
SR 5:27
Notes: Heathrow airport monitoring with Extreme Citizen Science Lab (UCL)

^ South Walney Island, Cumbria
START SAT 04:48 [05.20]
URL: locus.creacast.com:9001/south_walney.mp3
Streamer: Andrew Deakin, Octopus Collective, Sarah Dalrymple, Cumbria Wildlife Trust
Coordinates: +6m l 54.0508°N 3.1724°W
UTC +1
CT: 4:48
SR: 5:30
Notes: For context: soundtent.org/south_walney/live_stream.html

Ormskirk, West Lancashire
START SAT (London time) 04:49 [05:25]
URL locus.creacast.com:9001/liverpool_ormskirk
Streamer Alan Bowness
CT 04:49
SR 05:31
Notes: binaural stream - long standing independent stream on the LS soundmap

Sant Pere Pescador / Castello d’Empuries, Catalunya
Aiguamolls de l’Empordá wetland reserve
START SAT 05:08 [05:35]
URL: locus.creacast.com:9001/emporda_aiguamolls.ogg
Streamer: Jordi Giró Quer
Coordinates: +1 m l 42.2243°N 3.0929°E
UTC +2
CT 6:08
SR 6:39

Notes: Risk of dropouts depending on network traffic locally

^ São Gregório, Caldas da Rainha, Portugal
START SAT (London time) 06:05
URL stream.radiozero.pt/stress.mp3
Streamer: Osso Colectivo
Coordinates +122 m l 39.3559°N 9.0611°W
UTC +1
Civil Twilight 06:05
Sunrise 06:34
Notes
Links streams.soundtent.org/2019/streams/utc0_sao-gregorio-caldas-da-rainha-portugal
www.osso.pt/en/

Graça, Lisbon, Portugal
START SAT 06:07
URL locus.creacast.com:9001/lisboa_gra%C3%A7a.mp3
Streamer: João Bento
Coordinates 38.7167°N 9.1333°W
UTC +1
Civil Twilight 06:07
Sunrise 06:36
Notes: Balcony - melt-point with big overview to the city..

Queens, New York
START: SAT 10:18
URL: stream.borris.me:8888/outside2
Streamer: Dustin Perdue
Coordinates: 40.7128°N 74.0059°W (approximate)
UTC -4
CT 5.21
SR 5.51
Notes:

Acra, Upper Hudson Valley, NewYork
Pond station
START: SAT 10:20
URL: www.zachpoff.com/projects/pondstation/
Streamer: Zach Poff with Wave Farm
Coordinates: 42.3189°N 74.0780°W
UTC -4
CT 5:17
SR 5:48
Links: www.zachpoff.com/, wavefarm.org/

Galilee, Pennsylvania
START: SAT 10:22
URL locus.creacast.com:9001/galilee_pennsylvania.ogg
Streamer: G.H. Hovagimyan
Coordinates 41.7351°N 75.1396°W
UTC -4
CT 05:22
SR 05:53
Notes: Re-started for the broadcast in 2019

Greensboro, North Carolina, USA
START SAT 10:55
URL stream.borris.me:8888/outside
Streamer: Patrick aka Dustin Perdue
Coordinates: 36.0726°N 79.7920°W
UTC -4
CT 5:55
SR 6:23
Notes: The microphone has recently been moved a short distance to the South, to a peri-urban area on the edge of Jamestown

^ Chicago, Illinois
Radius soundcamp
START (London time) SAT 11:12
URL: partneraudio.wavefarm.org:8000/ta/jkolar.mp3.m3u [check: partneraudio.wavefarm.org:8000/jkolar.mp3]
Streamer: Radius soundcamp
Coordinates: 41.8781°N 87.6298°W
UTC -5
CT 05:12
SR 05:43

Gary, Indiana
START SAT 11:12
URL: locus.creacast.com:9001/gary_gmo_dunes1.ogg
Streamer: Greg O’Drobinak
Coordinates: 41.5934°N 87.3464°W
UTC -5
CT 5:12
SR 5:42
Notes: woodpeckers

^ Thompson Park, Miami, Florida
START (London time) SAT 11.18
URL locus.creacast.com:9001/mobile_driftwood.ogg
Streamer: Fereshteh Toosi
Coordinates 25.6024°N 80.3995°W
UTC -4
Civil Twilight 06:18
Sunrise 06:43
Notes More about Water Radio here: fereshteh.net/project/water-radio/
Links: streams.soundtent.org/2019/streams/utc-4_miami-florida-usa

^ Warblers Roost, South River, Ontario, Canada
START SAT (London time) 11:28
URL
Streamer: Darren Copeland, NAISA, Warbler’s Roost
Coordinates: +340m l 45.8233°N 79.5812°W
UTC -5
CT 05:28
SR 06:01
Links: NAISA radio is also relaying the broadcast naisa.ca/

^ Milpe Bird Sanctuary, Chocó Biosphere Reserve, Ecuador
START SAT (London time) 11:32

URL locus.creacast.com:9001/ecuador_open.mp3
Streamer: Paola Moscoso with Josep Navarro, Alice Eldridge
Coordinates 6.0000°N 77.0000°W
UTC -5
Civil Twilight 05:32
Sunrise 05:54
Notes In association with cloudforest.org
Links: streams.soundtent.org/2019/streams/utc-5_mindo

Toay, La Pampa, Argentina - Casa de Carbono
START SAT 11:32
URL: locus.creacast.com:9001/toay_la_pampa.ogg
Streamer: Fabian Racca, Claudia Salomon
Coordinates: 36.6741°S 64.3794°W
UTC -3
CT 07:32
SR 07:59

^ Santiago, Chile
START SAT (London time) 11:52
URL mobile_cristianpinto on the soundmap
Streamer: Cristián Pinto
Coordinates 33.4489°S 70.6693°W
UTC -3
CT 07:52
SR 08:18

Lima, Perú
START SAT (London time) 11:53
URL TBC
Streamer: Alejandro Cornejo Montibeller
UTC -5
Civil Twilight (local time): 05:53
Sunrise (local time): 06:15
Notes: In association with GRIS and Radiodialnet - also carrying the broadcast

South Pacific coastal forest, Costa Rica
START SAT 11:55
URL 209.133.216.3:7118/stream
Streamer: Joel Goodwin, Live Nature Songs
Coordinates 9.0885°N 83.6499°W
UTC -6
CT 4:55
SR 5:09
Notes: Occasional hiccup artefacts - can be loud

Austin, Texas, USA
START SAT 12:20
URL 209.133.216.3:7162/stream
Joel Goodwin, Live Nature Songs
Coordinates 30.4205°N 97.9103°W
UTC -5
CT 6:20
SR 6:45

Slopes of Mount Zion, Golden, Colorado
START SAT (London time) 12:28
URL: locus.creacast.com:9001/neoscenes.m3u TBC
Streamer: John Hopkins
Coordinates: 39.7555°N 105.2211°W
UTC -6
CT 05:28
SR 05:58
Notes: Not far from Deadman Gulch, Buffalo Bill's Gravesite, and the Mother Cabrini Shrine.. from a house set in a suburban mountain neighborhood at the fringe of wildlands on the east-facing side of Apex Park..
Links: tech-no-mad.net/blog/
streams.soundtent.org/2019/streams/utc-6_golden-colorado-39412544-e716-4ca1-8733-9ea05c371380

Cerro Pelón, State of México
START SAT (London time) 12:51
URL locus.creacast.com:9001/cerro_pelon.mp3
Streamer: Rob Mackay, Pablo Jaramillo López, Trees and Their People arborists training project
Coordinates 19.3918°N 100.2611°W
UTC -5
CT 06:51
SR 07:13
Notes: UNESCO Monarch Butterfly Biosphere Reserve. Solar powered off-grid stream in the mountains above Morelia. <) LS map for listening notes: locusonus.org/soundmap/

Tempe, Arizona
START SAT 13:10
URL locus.creacast.com:9001/tempe_arizona.mp3
Streamer: Garth Paine
Coordinates 33.4255°N 111.9400°W
UTC -7
CT 05:10
SR 05:36
Notes This mic is sitting in my back garden in Tempe Arizona
Expect a range of birds: Mockingbirds, woodpeckers, doves, towhees, vireos, sparrows, warblers, finches, hummingbirds; plus traffic, airplanes, occasional dogs, very occasional rain and general urban sounds. In the depths of the night, expect to hear the rattle of the pool pump.
Link streams.soundtent.org/2019/streams/utc-7_tempe-arizona:

Whitehorse, Yukon, Alaska
START SAT (London time) 12:48
URL TBC
Streamer: Chelsea Jeffery
Coordinates 60.7161°N 135.0538°W
UTC -7
Civil Twilight (local time) 04:48
Sunrise 05:46

Long Beach, California
START SAT (London time) 13:34
URL rtmp://a.rtmp.youtube.com/live2
Streamer: Yeltsin Penado
Coordinates: +33.7720033°, -118.1735951°
UTC -7
Civil Twilight (local time) 05:34
Sunrise 06:01
Links: streams.soundtent.org/2019/streams/utc-7_los-angeles, yeltsinanthonypenado.com/reveil-2019-live-stream/

Jasper Ridge Biological Preserve, Portola Valley California USA
START SAT 13:42
URL: locus.creacast.com:9001/jasper_ridge_birdcast.mp3
Streamer: Trevor Hebert, Stanford University
Coordinates: 37.4061°N 122.2446°W
UTC -7
CT 5:42
SR : 6:10
Notes: Woodland and wetland habitats
Links: JRBP Birdcast: jrbp.stanford.edu/about/facilities/live-audio-stream

Leweton Cultural Village, Island of Santo, Vanuatu
START SAT (London time) 19:41
URL tbc
Streamer: Sandy Sur with the Leweton Cultural Group and Leah Barclay
Coordinates +366m | 15.3971°S 166.9451°E
UTC+11
CT 05:41 (Sunday, local time)
SR 06:03

Hokkaido, Japan
START SUN 19:46 [20:00]
URL: mp3s.nc.u-tokyo.ac.jp/Maeyama_CyberForest.mp3
Streamer: Cyberforest
Coordinates: 51.5017°N 0.0397°W
UTC +9
CT 03:46 (Sunday, local time)
SR 04:17
Notes: Wind and rain in trees. Live on the hour for 20 or so minutes

^ Residential Red Zone, Christchurch, New Zealand
START SAT (London time) 19:54
URL tbc
Streamer Simon Gray
Coordinates 40°38'33.0"S 172°29'07.1"E
UTC +12
CT 06:54 (Sunday, local time)
SR 07:24
Links: streams.soundtent.org/2019/streams/utc12_christchurch-new-zealand

Yamanashi, Yakanakako, Japan
Fuji Iyashinomori Woodland Study Centre
START SAT 20:22
URL: mp3s.nc.u-tokyo.ac.jp/Fuji_CyberForest.mp3
Streamer: Cyberforest
Coordinates: 35.4031°N 138.8415°E
UTC +9
CT 04:22 (Sunday, local time)
SR 04:50
Notes: Artificial forest at 1000m near the foot of Mt. Fuji.

^ Eudlo Creek, Queensland, Australia
START SAT (London time) 20:49
URL
Streamer: Leah Barclay, Biosphere Soundscapes
Coordinates: 26.3645°S 152.9677°E
UTC +10
CT 05:49(Sunday, local time)
SR 06:13
Notes: Freshwater ecologies. > also remote performance listed in London program

Mary Cairncross Scenic Reserve, Maleny, Queensland, Australia
START SAT (London time) 20:50
URL tbc
Streamer: Leah Barclay, Biosphere Soundscapes
Coordinates +431m | 26.7735°S 152.8754°E
UTC +10
CT 5:50 (Sunday, local time)
SR 6:14
Notes www.mary-cairncross.com.au/

^ Culture Space Yang, Georo village, Jeju, Korea
START SAT (London time) 21:15
URL locus.creacast.com:9001/jeju_georo.mp3
Streamer: Weather Report (Jiyeon Kim, Gangil Yi)
Coordinates +38m | 33.5126°N 126.5606°E
UTC +9
CT 05:15 (Sunday, local time)
SR 05:42

Merri Creek, North Fitzroy, Inner Melbourne, Australia
START SAT (London time) 21:36
URL tbc
Streamer: Martin Friedel
Coordinates 37.7886°S 144.9788°E
START
UTC +10
CT 06:36 (Sunday, local time)
SR 07:03
Notes: Urban area with restored indigenous vegetation - Stream
TBC

Hanoi, Vietnam
START SAT (London time) 23.00
URL mixlr.com/soundawakener/

Streamer Nhung Nguyen
Coordinates 21.0245°N 105.8412°E
UTC +7
Civil Twilight 05:00 (Sunday, local time)
Sunrise 05:24
Links: soundawakener.com/
Alternative stream URLs TBC: locus.creacast.com:9001/ha_nội_nhungnguyen.ogg
locus.creacast.com:9001/mobile_nhung.ogg

Chittaranjan Colony, Kolkata, India
START SUN (London time) 00:08
URL: locus.creacast.com:9001/kolkata_chittaranjan_colony.mp3
Streamer: Sukanta Majumdar (The Travelling Archive)
Coordinates: 22.4891°N 88.3779°E
UTC +5.30
CT 4:38
SR 5:01
Links: streams.soundtent.org/2019/streams/utc530_kolkata-2a2b8a18-d72b-4085-90a9-df1265dad909
Notes: Interview with Sukanta Majumdar at [acousticcommons.net/](#)

Between Shenchén Clinic and Mahankal Road, Bouddhanath, Kathmandu
START SUN (London time) 00:11
URL TBC
Streamer: Michael Northam
Coordinates: 27.7017°N 85.3206°E
UTC: +0545
Civil Twilight 04:56
Sunrise 05:21
Notes: Near the Shenchén monastery. Coordinates approximate
Links [orogenetics.org](#)

Tallinn, Estonia
START SUN 02:18
URL [3.onj.me:8000/joutside](#)
and on the soundmap > [Estonia-Tallinn](#)
Streamer: Jakob Rosin
Coordinates +12 m | 59.4370°N 24.7536°E
UTC +3
CT 4:18
SR 5:12
Notes: Tallinn old city. [twitter.com/jakobrosin](#)

Piirimäe, Mooste, Estonia
START SUN 02:19
URL: locus.creacast.com:9001/mobile_estonia1.ogg
Streamer: John Grzinich
Coordinates: 58.1617°N 27.1945°E
UTC +3
CT 4:19
SR 5:09
Notes: Piirimäe is surrounded by rural farmland, boreal and marshy forests which are home to a wide range of birds, frogs and domestic cattle.

Links: [streams.soundtent.org/2019/streams/utc3_mooste](#)

Beirut, Lebanon
START SUN (London time) 03:18
URL:
Streamer: Budhaditya Chattopadhyay
Coordinates:
UTC +3
Civil twilight 05:18
Sunrise 05:45

^ North Jordan Valley
START SUN (London time) 03:22
URL:
Streamer: Meira Asher
Coordinates: 32.3105°N 35.5235°E
UTC +3
Civil twilight 05:22
Sunrise 05:48
Links: Radioart 106

Berlin, Neukoeln
START SUN 03:48
URL:locus.creacast.com:9001/berlin_neukoelln.ogg
Streamer: Henrik Schroeder, Radio Aporee
Coordinates 52.4790°N 13.4376°E
UTC +2
CT 4.48
SR 5.28

Berlin, Backyard
START SUN 03:48
URL: locus.creacast.com:9001/berlin_berlinbackyard.ogg
Streamer: Udo Noll (Radio Aporee)
Coordinates
UTC +2
CT 4.48
SR 5.28

^ Gülper See, Rhinow, Germany
START (London UTC+1): SUN 03:51
URL: [streams.soundtent.org/2019/streams/utc1_rhinow](#)
Streamer: Joost van Duppen, Laura Weber
Coordinates: +21 m | 52.7461°N 12.2302°E
UTC +2
CT 4:51
SR 5:32

Prague, Czechoslovakia
START SUN 03.54
URL TBC
Streamer Miloš Voytechovsky
Coordinates
UTC +2
Civil Twilight 04:54
Sunrise 05:32

Notes
Links [www.agosto-foundation.org/](#)

^ Lykavittos, Athens
START SUN (London time) 03.56
URL [locus.creacast.com:9001/athens_rooftops.ogg](#)
Streamer: Alyssa Moxley
+264 m | 37.9818°N 23.7431°E
UTC +3
CT 5:56
SR 6:24
Notes: Check also the remote performance from the rooftop of Ελτα Projects on Saturday 4 May played at Stave Hill Ecological Park, London at 18:00 London time

Sumburgh Head, Shetland
START SUN 03:59
[www.shetlandwebcams.com/cliff-cam-3/](#)
Shetland webcams with Shetland Amenity Trust
Coordinates +51 m | 59.8543°N 1.2746°W
UTC+1
CT 03:59
SR 04:54
Notes:Cliff Cam 3 - Coastal, range of seabirds, sheep? near lighthouse, occasional planes, regular blip every 6ish seconds

^ Steklinik, Rastlinjak Tivoli, Ljubljana (Glasshouse Tivoli Park, Ljubljana), Slovenia
START SUN 04:09
Streamer: Irena Pivka, Brane Zorman (Radio CONA)
URL [tbc 2018 radioCona: tmp.si:8000/cona.ogg](#)
+305 m | 46.0547°N 14.4948°E
UTC +2
CT 5:09
SR 5:43
Notes: For more information <) [www.steklenik.si/en/home/](#)
Links: [www.radiocona.si/](#)
[www.radiocona.si/](#)

Lake Cerknica, Slovenia
START SUN (London time) 04:11
Streamer: Irena Pivka, Brane Zorman (Radio CONA)
URL TBC
Coordinates 45.7689°N 14.3552°E
UTC +2
CT 5:11
SR 5:45

Belgian Quarter, Cologne, Germany
START SUN 04:21
URL [locus.creacast.com:9001/cologne_aporee.ogg](#)
Streamer: Udo Noll
+37 m | 52.4932°N 13.4248°E
UTC +2
CT 05:21
SR 05:59

Links: [radioaporee.org](#)
Notes: Street-side balcony over a little street with low traffic, cyclists and pedestrians..

^ Calvanico, Salerno, Campania
START SUN (London time) 04:24
Streamer: Luca Buoninfante, Beatrice Ferrara, Raffaele Maricone, Leandro Pisano
URL [tbc](#)
Coordinates: 40 °47′N, 14 °50′E
UTC +2
Civil twilight 05:24
Sunrise 05:54
Links: [streams.soundtent.org/2019/streams/utc2_salerno-24398f0d-ba59-4224-bb8a-65c6b72714df](#)

Mtwara, Tanzania
START (London time) SUN 04:24
URL [locus.creacast.com:9001/mobile_goodluck.ogg](#)
Streamer: Goodluck George
Coordinates 10.2667°S 40.1833°E
UTC +3
Civil Twilight (local time) 06:02
Sunrise (local time) 06:24
Notes: Main market in Mtwara Urban. Mobile stream with Locuscast.

^ Hammerlochgut, Black Forest
Vogelklang soundcamp
START SUN (London time) 04:28
URL TBC [locus.creacast.com:9001/breitnau_idcd-hammerlochgut.ogg](#)
Streamer: Olsen Wolf, Norbert Schnell
Coordinates: 47.9544°N 8.1207°E
UTC +2
CT 5:28
SR 6:04
Soundcamp info [global-forest.com/](#)

Flaws Pier, Stromness, Orkney
START SUN (London time) 04:14
URL [locus.creacast.com:9001/stromness_sailhouse.ogg](#)
Streamer: Amy Beeston, Mark Summers
Coordinates +7 m | 58.9650°N 3.2960°W
UTC+1
CT 04:14
SR 05:07
Notes: [streams.soundtent.org/2019/streams/utc1_stromness](#)

Scarborough, UK
START SUN (London time) 04:34
URL [locus.creacast.com:9001/scarborough_library.mp3](#)
Streamer: Rob Mackay, Scarborough Library, Invisible Dust,

Scarborough Library Code Club
Coordinates: 54.2801°N 0.4032°W
UTC +1
CT: 04:34
SR: 05:16
Notes: Library roof with vents, fans, gulls, voices, shipping horns

Gosforth, Newcastle upon Tyne, UK
START SAT SUN 04:34
URL locus.creacast.com:9001/newcastle_upon_tyne_gosforth.ogg
Streamer:
Coordinates: 55.0000°N 1.6167°W
UTC +1
Civil Twilight 04:34
Sunrise 05:18
Notes: Locuscast + iOS

Walberswick, Suffolk, UK
START SUN 04:35
URL: locus.creacast.com:9001/suffolk_coast_Walberswick.ogg
Streamer: Peter Sinclair
Coordinates: 52.3150°N 1.6614°E
UTC +1
CT 4:35
SR 5.15
Notes: Peter Sinclair is co-founder and artistic director of Locus Sonus. He also operates a stream from where he lives in Niolon. This stream is from a studio window in the garden of his mother’s home on the edge of Walberswick.

^ Sheringham Park, Norfolk, England
START 04:36
URL locus.creacast.com:9001/sheringham_sheringham_park.ogg
Streamer: Martin Scaiff, Recast Music Education, The National Trust, Mancroft Advice Project
Coordinates: 52.9294°N 1.1721°E
UTC +1
CT 04:36
SR 05:17
Notes: Solar powered streambox. Part of the homesounds project, engaging young people around listening and sense of place: www.recastmusiceducation.com/homesounds-soundbites-blog

Valletta, Malta
START SUN (London time) 04:38
URL TBC
Streamer Letta Shtoryn
Coordinates 35.8997°N 14.5147°E
UTC +2
Civil Twilight 05:38
Sunrise 06:05
Notes: Pigeoncast
Links: www.lettashtohryn.xyz/

Cumiana, Italy

START SUN 04:42
URL: 78.46.38.217:80/vlf15
Streamer Renato Romero
Coordinates
UTC +2
CT 05:42
SR 06.14
Notes: VLF (Very Low Frequency) ‘natural’ radio waves, propagated by lightning and other interference in the electromagnetosphere. Intercepted with a large T antenna. Made available at abelian.org
Links www.vlf.it/cumiana/livedata.html, abelian.org

^ Patterdale, Cumbria
START SUN (London time) 04:42
URL TBC
Streamer: R L Wilson
Coordinates
UTC +1
CT 4:42
SR 5:23
Links: rlwilson.org.uk/

Hoo Valley, Peak District National Park
START SUN 04.44
URL TBC
Streamer: Dominic Garcia-Hall
UTC +1
CT 4:44
SR 05:25
Notes: Hoo Valley: Unstocked upland farm surrounded by a diversity of habitats, including heather moor, blanket-bog rich in cotton grass, hay meadows, small birch woodlands, ancient hedgerows, beech and ash copses

^ Tower Hamlets Cemetery Park, London
START: SUN (London time) 04:46
URL locus.creacast.com:9001/mobile_soundcultures.ejf.mp3
Streamer: Ella Finer
Coordinates: +14m | 51.5233°N 0.0273°W
UTC +1
CT 04:46
SR 05:25
Notes Tower Hamlets Study Group

^ Stanmer Park, Brighton
START SUN (London time) 04:49
URL TBC
Streamer: Julian Weaver
Coordinates
UTC +1
CT 4:49
SR 5:27
Links: www.hypo.io/, www.finetuned.org/julian-weaver-sordine.html

Leamington Spa, Midlands
START SUN 04:48
URL locus.creacast.com:9001/mobile_ecopoetics.ogg
Streamer: Jonathan Skinner
Coordinates 52.2852°N 1.5200°W
UTC +1
Civil Twilight 04:48
Sunrise 05:28
Notes
Links ecopoetics.wordpress.com/

^ Couvent Levat, Marseille Nord
START: SUN 04:55
URL TBC
Streamer: Grégoire Lauvin, Locus Sonus, Déletère, Juxtapoz
Coordinates: 43.3099°N 5.3882°E
UTC +2
CT 05:55
SR 06:26
Links: locusonus.org/, deletere.org/, www.atelier-juxtapoz.fr/lecouventlevat

Le Rove, Niolon, France
START SUN 04:55
URL: locus.creacast.com:9001/le-rove_niolon.ogg
Streamer: Peter Sinclair
Coordinates: 43.3390°N 5.2568°E
UTC +2
CT 05:55
SR 06:27
Notes: Le Rove, Calanque de Niolon
Links: locusonus.org/

Le Vésinet, France
START: SUN (London time) 04:58
URL: locus.creacast.com:9001/vesinet_cerceris.ogg
Streamer: marieheûln
Coordinates: 48.8942°N 2.1347°E
UTC +2
CT 05:48
SR 06:24
Notes: ‘I live in a road between the railway station and Seine’s water’

^ Dartington, Devon
Soundart Radio soundcamp
START SUN 05:05
URL icecast.commedia.org.uk:8000/soundart.mp3
Streamer: Lucinda Guy, Chris Wood, Soundart Radio
Coordinates: +70m | 50.4540°N 3.6945°W
UTC +1
CT 5:05
SR 5:43
Notes:

^ Penryn, Cornwall, UK

End of the World Garden soundcamp
START SUN 05:12
URL locus.creacast.com:9001/cornwall_penryn.mp3
Streamer: Bram Thomas Arnold, Paul Chaney, Trail Mix
Coordinates: 50.1681°N 5.1058°W
UTC +1
CT 05:12
SR 05:49
Notes: approximate location

^ Stave Hill Ecological Park, London, UK
START SUN 05:50
URL locus.creacast.com:9001/london_stave_hill.ogg
Streamer: soundcamp
Coordinates: 51.5017°N 0.0397°W
UTC +1
CT 04:46
SR 05:25
Notes: Start time near the end of the broadcast. Mobile stream by Maria Papadomanolaki with closing comments

06.00 **END**

John Cadera, Richard Page-Jones

- | | | |
|---|--|--|
| <input type="radio"/> Black headed gull | <input type="radio"/> Herring gull | <input type="radio"/> Starling |
| <input type="radio"/> Blackbird | <input type="radio"/> House martin | <input type="radio"/> Stock dove |
| <input type="radio"/> Blackcap | <input type="radio"/> House sparrow | <input type="radio"/> Swallow |
| <input type="radio"/> Blue Tit | <input type="radio"/> Jay | <input type="radio"/> Swift |
| <input type="radio"/> Buzzard | <input type="radio"/> Kingfisher | <input type="radio"/> Tufted duck |
| <input type="radio"/> Canada goose | <input type="radio"/> Lesser Black Back Gull | <input type="radio"/> Woodpigeon |
| <input type="radio"/> Carrion crow | <input type="radio"/> Long Tailed Tit | <input type="radio"/> Wren |
| <input type="radio"/> Chaffinch | <input type="radio"/> Magpie | |
| <input type="radio"/> Chiffchaff | <input type="radio"/> Mallard | |
| <input type="radio"/> Collared dove | <input type="radio"/> Meadow pipit | |
| <input type="radio"/> Dunnock | <input type="radio"/> Mistle Thrush | |
| <input type="radio"/> Feral pigeon | <input type="radio"/> Moorhen | |
| <input type="radio"/> Firecrest | <input type="radio"/> Peregrine | |
| <input type="radio"/> Goldcrest | <input type="radio"/> Pied wagtail | |
| <input type="radio"/> Goldfinch | <input type="radio"/> Reed warbler | |
| <input type="radio"/> Great Black Back Gull | <input type="radio"/> Ring Necked Parakeet | |
| <input type="radio"/> Great Spotted | <input type="radio"/> Robin | |
| <input type="radio"/> Woodpecker | <input type="radio"/> Sand martin | |
| <input type="radio"/> Great Tit | <input type="radio"/> Sedge warbler | |
| <input type="radio"/> Greenfinch | <input type="radio"/> Song Thrush | |
| <input type="radio"/> Grey wagtail | <input type="radio"/> Sparrowhawk | <input type="radio"/> h = heard |
| <input type="radio"/> Greylag goose | <input type="radio"/> Spotted flycatcher | <input type="radio"/> s = seen |

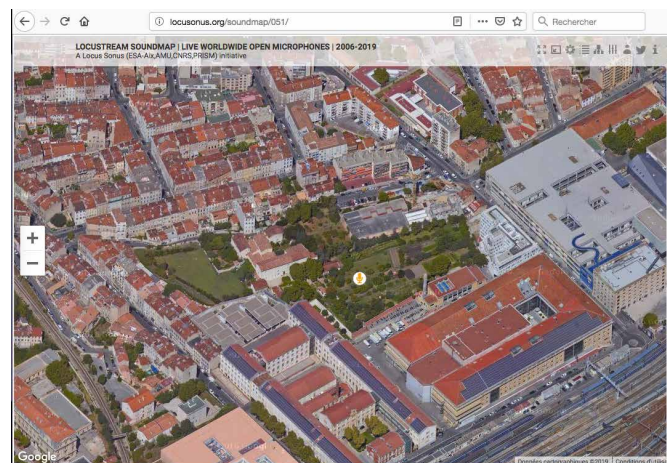


Image: Grégoire Lauvin

Reveil reaches Marseille Nord

Live stream from the soundcamp at Couvent Levat
by deletere with Locus Sonus

The Couvent Levat is a green space in the center of Marseille. Until a few years ago it was a vegetable garden with orchards for the nuns who lived here in isolation from the world. It is now the workplace of some 90 artists, and open to the public for visits.

The program will include:
Performance by Erin Gee and Mitchell Hermann
(Locus Sonus).

Improvisation on birds song records by Damien Sorentino and Gaëtan Parseihian (delete).
Live stream listening from the convent by Grégoire Lauvin (delete).

Audio bird census by Yasushi Sako (Cyberforest).

Being – Listening – Embedding – Live Streaming

Dr. Bram Thomas Arnold

You can plan forever but never for everything, you can test run something again and again and forever again and yet still, as the world turns and the light falls anew on the window of the barn in the Tractor Shed at End of The World Garden, a horticultural facility in Cornwall, that moment has never happened before, those conditions uniquely unlike anything ever before them, and the tested equipment, perfect in a thousand moments on the previous day, can still fail at dawn. The dew on the window glows with a golden Cornish light, unlike the red light on the antenna of the Raspberry Pi, that seems to have given up against the spring damp. And so alas, the stream from the garden is silent, until next year.

Beyond the Tractor Shed, someone arrives to rebuild the fire, and amongst all this time, amongst all this technical failure, all this effort expended, all this fire alight, all these embers glowing, and a bell ringing out in the field to wake the campers in the hour before dawn, dark, the birds sing (Hughes, 1968).

End of The World Garden was once a field, not so long ago, a meagre 15 years, not even a geological blink, barely perceptible, it was just a field, part of the green desert of anthropocentric industrialised agriculture. It is now a two-acre forest garden and horticultural facility and its main protagonist and pruner, the artist Paul Chaney states that “no matter how developed the sphere of technology and human cognition becomes, the physical human body still exists within the biotic sphere, nested inside a web of complicity, and irrevocably intertwined with the systems of the planet”(Chaney, 2012). The Garden exists, then, to remind us of this, and increasingly to offer audiences, campers, associates and rebels the opportunity to remind themselves of this. To step into the Garden is to step into a world where that great othering phrase Nature has been forcibly



abandoned by the exhausting entropic demands of co-existence. Felix Guattari once wrote that “ecology needs to stop being associated with the image of a small nature-loving minority or with qualified specialists” (Guattari, 2005) and the Garden is a place where art, politics and ecology are colliding, colluding and remaking the world out of the ugly horror of human and non-human interactions. It is an anti-romantic place for co-existence and DIY culture, and all the mundanity that entails, whilst simultaneously retaining the capacity to be utterly sublime, a place of irrefutable everyday beauty.

Soundcamp opens the Garden to the world, and the world to the Garden. For three years now, the artist Bram Thomas Arnold has hosted an overnight event, quietly opening the gates to the garden ever wider each year for 24 hours of being, listening, embedding and attempts at live streaming that are intermittently successful. In the same way that the garden is forever a work in progress, live streaming a global dawn from a hundred different global locations is not an exact science. It is a story, a dream, a process of myth making, and an act of romantic conceptualism, which Jorg Heiser categorises as a given form such that, by “using particularly few aesthetic interventions or conceptual instructions, a particularly large number of possibilities for thinking beyond this choice [can emerge]” (Heiser, 2007).

Chaney, P., 2012. *Perspectives Emerging From FIELDCLUB 2004 - 2012*. Personal archive of the artist.

Guattari, F., 2005. *The Three Ecologies*, Second English print. ed. Continuum, London.

Heiser, J., 2007. *Romantic Conceptualism*. Kerber Verlag, Leipzig.

Hughes, T., 1968. *The Hawk in the Rain*. Faber.

EoTWG soundcamp
Photo: Paul Chaney

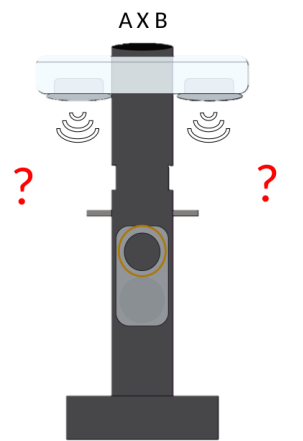


Image by Elisabeth Zandberg

Talk: Do Birds Hear As We Do?
 Dan Stowell (QMUL)

Songbirds depend on sound as a crucial part of their life, so they must be good listeners as well as good singers. But do they hear the same nuances that we do? We already know that there are differences, in frequency range and sensitivity to detail. But it’s very hard to predict, given an arbitrary pair of very similar sounds, if a bird would consider them “same” or “different”. In this talk Dan will describe his work as part of a current research project at Queen Mary University of London, working on a way to ask birds directly about that, so that we can get a better idea of their sound perception.

Talk: Listening to internet infrastructures
 Matt Parker

What are the sounds of digital media and how might we listen to them? By listening to their infrastructures, what might we learn about our relationship with media technologies?

Matt Parker is a Sonospheric Investigator; an artist researching the resonances between things.

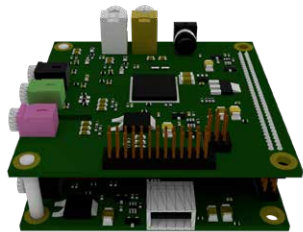


Image by Max Baraitser Smith

Streaming workshop - DIY tech for sharing sounds in real time
 Soundcamp

Practical overview on setting up a live audio stream with a phone, laptop or Raspberry Pi.

Kiatsu: The Sound of The Sky Being Torn
 A film by Angus Carlyle and Rupert Cox 2012

Air Pressure was a long-term collaboration between anthropologist Rupert Cox and sound artist Angus Carlyle, together with acoustician Kozo Hiramatsu. It draws on their experiences of recording the activities of the last farming family living within the concrete and steel infrastructure of Japan’s largest airport, where noise - of taxiing and of take-offs and landings - exerts a constant pressure from before dawn until well after dusk.

In addition to this film, Air Pressure exists as a CD and booklet on the Gruenrekorder label. The Air Pressure project was funded by The Wellcome Trust.

Adapted from www.anguscarlyle.com/air-pressure.html



From *The Tidal Sense*
 Installation with Signe Lidén

Ramberg, Lofoten, Flakstad, Nordland
 For LIAF 2019

An installation in the intertidal zone at Ramberg conveys sounds of the incoming tide from its low point at 07:50 to its height at 14:00 (NO time). Live sounds from the canvas and electronic sensors at Lofoten will be relayed in the round blue hut at Stave Hill Ecological Park on the Sunday morning of the soundcamp, in the interval from low tide at 05.50 to high tide at 12:00 (UK time).

